



LifeLocator® III+



- 1 GSSI Sensor
- 2 Status Indicators
- 3 Handheld PDA
- 4 Easy-to-Use Graphic Interface

The hours following a natural disaster are critical in terms of getting first responders deployed and operational onsite as quickly as possible. The first hours are particularly critical for the Search & Rescue teams tasked with locating victims trapped under collapsed debris.

The LifeLocator III+ is a portable rugged device that detects the presence of life under collapsed structures as a result of natural disasters. Using the principles of ultra wideband (UWB) ground penetrating radar, the LifeLocator III+ can detect movement in up to ten meters of debris and breathing in up to eight meters.

Search Optimization

The LifeLocator quickly distinguishes the presence of live victims in support of the rescue effort.

Ease of Use

The user selectable graphical interface uses icons to indicate detected motion and breathing. First responders can become proficient in LifeLocator operation in a few hours.

Portable

The LifeLocator is lightweight and portable and is readily deployable by a single individual.

Proven Results

The LifeLocator is a field-tested solution that has saved lives in the aftermath of the Sichuan Province and Haiti earthquakes.



LifeLocator Solutions

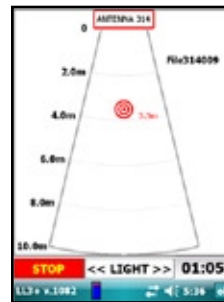
The LifeLocator uses UWB technology to greatly improve the odds of rescue following structural collapses due to weather, fire or catastrophic attack, avalanches, flash floods, earthquakes or other natural disasters. The LifeLocator is ideally suited for life rescue, locating victims by sensing even the minor movements of shallow breathing. The sensor detects signals that are relayed in real-time to a PDA. The information allows rescue

personnel to accurately and rapidly determine the distance to the victim. A key advantage of the technology is that it is not misled by scent drift or from the scent of the deceased. It does not require line of sight or the complete silence that challenges video and audio monitoring search and rescue tools. Ease of mobility and placement over treacherous ground further enhances the system's in-field effectiveness.

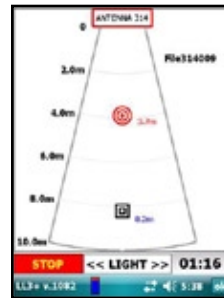
Easy to Deploy

Deploying the LifeLocator® is simple and easy. Here is a basic how-to method for a successful survey:

1. Establish the appropriate grid/survey area.
2. Place the sensor on the ground/debris material.
3. The PDA, if operating in simple run mode, will display red circles or black squares if the unit has detected signs of life. The red circles indicate breathing, while the black squares indicate motion.
4. To determine how far the victim is located from the sensor, there is a distance indicator on the left side of the screen.
5. If nothing has been detected within 3 minutes, move on to the next grid selection and continue with the search.



Red circle indicates a strong confidence level of breathing detection.



Red circle and black square indicate the detection of both motion and breathing.



PDA with black square indicating strong motion detection at 3 meters from sensor.

LifeLocator Includes

Sensor

- Three (3) Li-ON Batteries
- Battery Charger

PDA

- One (1) Li-ON Battery
- Battery Charger
- Spare AA Battery Pack

Rugged Transit Case

Users Manual

Quick Start Guide

GUI Chart (System Menus)

Training DVD

Specifications

Motion detection: up to 30 ft (10 m)

Breathing detection: up to 18 ft (6 m)

Detection volume: 4500 cubic ft (127 cubic m)/3 minutes

Wireless range: up to 150 ft (30 m) Wi-Fi

Sensor unit

Size: 18x18x9 in (45x45x22 cm)

Weight: 21 lbs (9 kg)

Battery life: up to 6 hours

Battery type: Li-ON

PDA control unit

Size: 3.75x6.5 in (9.5x16.5 cm)

Weight: 17 oz (490 g)

Battery life: up to 10 hours

Windows Mobile 6.0 (Premium Edition)

Sunlight readable TFT display/backlight for low light

www.gssilifelocator.com • sales@gssilifelocator.com

12 Industrial Way • Salem, NH 03079-4843

Tel: (603) 893-1109 • Fax: (603) 889-3984

